





Our high quality trolleys include a wide range of solutions to carry, display and store food. The structure is entirely developed with our own profiles, extruded with primary aluminium alloys in compliance with European standards and anodized as required by QUALANOD label.

All our models are suitable for contact with foodstuff, can be washed and sanitized according to HACCP and comply with current EU laws and regulations for safety at work.

TROLLEYS

Brake-equipped swivel wheels (suitable for heavy loads) ensure that our trolleys are extremely safe, stable and highly manoeuvrable even when fully loaded. All joints and fittings are either made of steel (stainless steel or galvanised steel) or highly resistant aluminium alloy, with no plastic components, in order to guarantee resistance and solidity.

Trolleys are available in different versions and size on request and can be integrated or modified to meet the needs of the user.

TROLLEYS

TROLLEY TO CARRY QUARTERS ON SLIDING HOOKS



On request this product is also available with plastic cover suitable for contact with foodstuff.

This trolley is designed for transporting meat quarters from the loading area to the cold room, with safe collar for direct insertion into the rail. It is suitable for heavy duties and mounted on wheels of 200 mm in diameter, particularly solid and safe. Thanks to its hook blocking system, the load is always kept in a balanced position, avoiding hung pieces to slide.

Trolleys can be made to measure and capacity can vary according to the user needs.

An example of trolley measuring 160x70h254 cm with 4 sliding hooks and standard wheels (2 with brake).



Max load capacity: 400 Kg



**+60°
-15°** Working temperature:
from -15°C to +60°C.

TROLLEY TO CARRY QUARTERS ON FIXED HOOKS



On request this product is also available with plastic cover suitable for contact with foodstuff.

This trolley is conceived for meat quarters to be transported from the unloading area to the cold room. This trolley is mounted on wheels of 200 mm in diameter, is particularly solid and safe. The structure and size can be adapted to clients' needs.

TROLLEY TO CARRY QUARTERS
(OR MEAT PIECES)

An example measuring 160x70h220 cm with 4 sliding hooks and standard wheels (2 with brake).



Max load capacity: 400 Kg



**+60°
-15°** Working temperature:
from -15°C to +60°C.

Made to measure

TROLLEY WITH SHELVES AND HANGING BARS FOR SALAMI

Wheels are 125 mm in diameter. They are made of plastic material and rubber with polyamide support, with bumper (2 are braked). Different wheels are available on request, also for different capacities and temperature.

In the picture an example of trolley measuring 120x60h160 cm, with 3 oval hanging bars for salami, 2 "Q" shelves and 1 plain "PQI" shelf with containment structure. Wheels displayed are made of stainless steel and plastic material.

In the picture the hanging bars are equipped with plastic hooks which can be supplied separately.

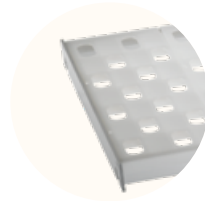
Max load capacity: 300 kg



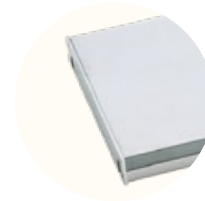
Working temperature:
from -20 °C to +60 °C.



Trolleys can be equipped with:



"Q" shelves: aluminium structure and polypropylene perforated staves



"PQI" shelves: aluminium structure and polypropylene support staves with AISI 304 stainless steel cover



Hanging bars for salami with 2, 3 or 4 oval sections.

In the picture an example of trolley measuring 120x60h160 cm, with 2 hanging bars for salami (1 with three bars and 1 with two bars) and a plain "PQI" shelf with containment structure.

Max load capacity: 300 kg



Working temperature:
from -20 °C to +60 °C.



Custom made: the size and number of shelves are chosen according to the clients' needs.



TROLLEY FOR COLD CUTS MATURING

This trolley, measuring 84x77x185 cm, is meant for cold cuts maturing. It can be equipped with 2 or 3 levels of removable hanging bars. Wheels are 125 mm in diameter. They are made of stainless steel and plastic material (2 are braked).

Optional stainless steel drip tray can be supplied on demand.



Available with either aluminium or wooden hanging bars



Max load capacity: 300 kg



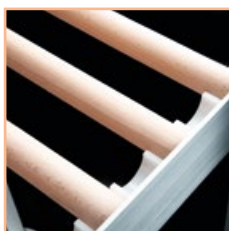
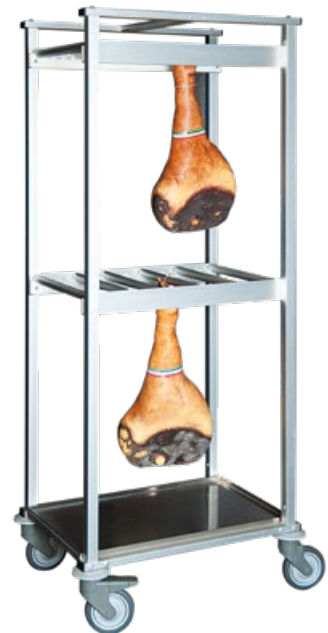
**+60°
-20°**

**Working temperature:
from -20°C to +60 °C.**



This article can also be supplied with shelves.

Available in a "light" version for shops or small laboratories.



Custom made: the size and number of shelves are chosen according to the clients' needs.