





Our processing room furniture, as well as all our equipments, derive from an accurate search for high quality raw materials, robustness, solidity and finer details. The result is a functional product, with a pleasant design, which fully complies with safety and hygiene requirements, two crucial features in the processing area.

WORK TABLES SINKS, CHOPPERS









The frame is always made from a special anodised aluminium alloy, with our own exclusive design. The tops, instead, can be made of high density food contact polyethylene or AISI 304 stainless steel (sinks are also available on demand). They are mounted on stainless steel feet and anti-slip rubber. They are all custom made. Clients are also given the possibility to buy just the frames - which are shipped partly disassembled - and equip them with their own accessories.

WORK TABLES, SINKS, CHOPPERS



WORK TABLES, SINKS, CHOPPERS

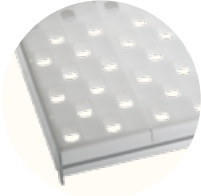
Solid and robust frames, with essential and aesthetically pleasant lines, made to measure and equipped with different kinds of tops, sinks and chopping blocks.

<p>AL+PP+ AISI 304</p> 	<p>FRAMES: Anodised aluminium alloy frame + copolymer polypropylene shelves + AISI 304 stainless steel covers</p>	<p>HACCP</p>	<p>Easy to clean and to sanitize according to HACCP</p>
<p>AISI 304/ PE HD</p> 	<p>TOPS: AISI 304 stainless steel or food contact HD polyethylene</p>		<p>Polypropylene staves can be removed and washed in dishwasher</p>
	<p>Made to measure</p>		<p>Adjustable feet</p>
	<p>Stable and solid</p>		<p>No rust. 10-year warranty against water and humidity corrosion</p>
			<p>Suitable for direct food contact in compliance with European requirements</p>

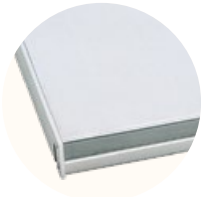
WRAP MODEL

All tops are also available with risers or with risers on more sides

In the picture an example with stainless steel top, riser and lower polypropylene shelf (available also with stainless steel cover)



Shelf with PP perforated staves



Shelf with stainless steel AISI 304 cover

In the picture an example with stainless steel top, riser and full perimetral profile



Profile height: 200 mm. Available lengths up to 350 cm without intermediate supports.
A solid and elegant solution.

In the picture an example with polyethylene top and polypropylene shelf (available also with stainless steel cover)



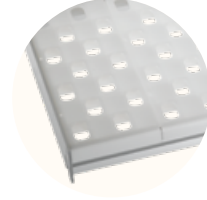
In the picture an example with polyethylene top and full perimetral profile



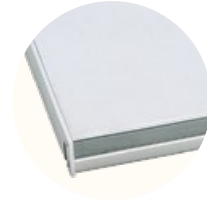
BASIC MODEL

All tops are also available with or without risers on one or more sides

In the picture an example with stainless steel top, riser and lower polypropylene shelf (available also with stainless steel cover)



Shelf with PP perforated staves



Shelf with stainless steel AISI 304 cover

Profile 70x30 mm. Light, but performing. For cost-effective solutions.



In the picture an example with stainless steel top, riser and full perimetral profile



In the picture an example with polyethylene top and polypropylene shelf (available also with stainless steel cover)



In the picture an example with polyethylene top and full perimetral profile

CHOPPERS

Solid chopper made of anodised aluminium alloy, with polyethylene surface suitable for food contact. It can also be made to measure, on request. The feet are made of stainless steel and anti-slip rubber, both adjustable and self-levelling. We can supply only the frame ready to be applied to the working block.



In the picture a chopper 50x50x90 cm, with polyethylene surface suitable for foodstuff. Thickness: 10 cm.